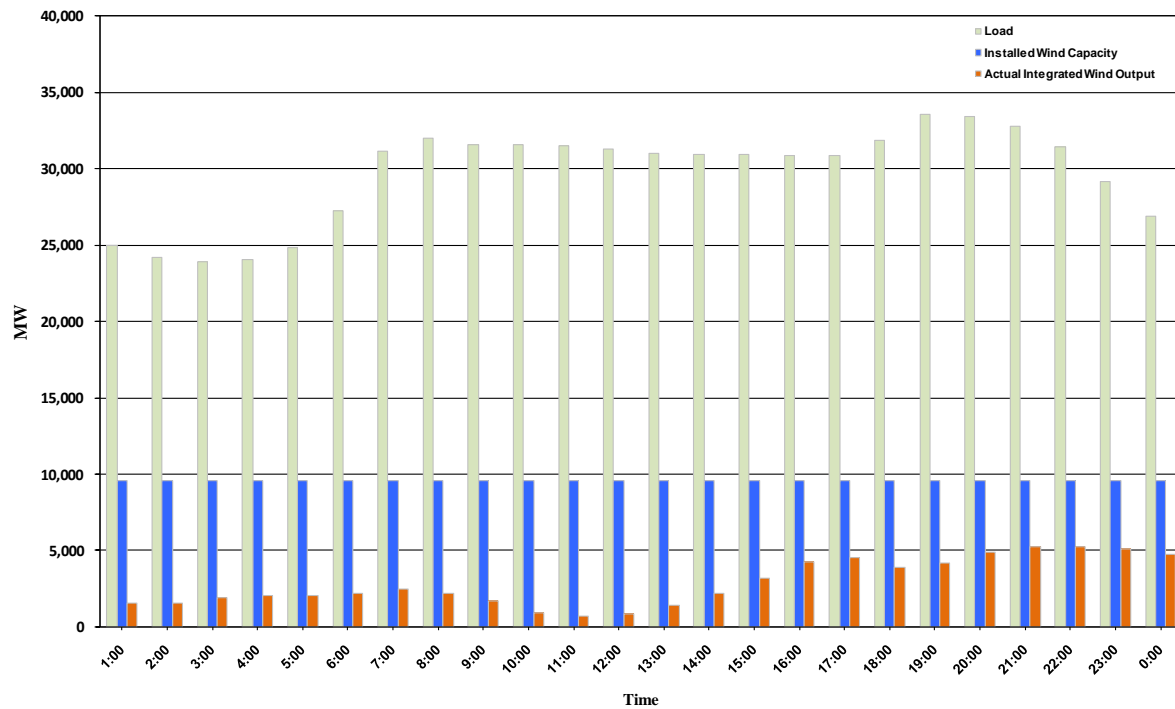




ERCOT Grid Operations Wind Integration Report: 11/16/10

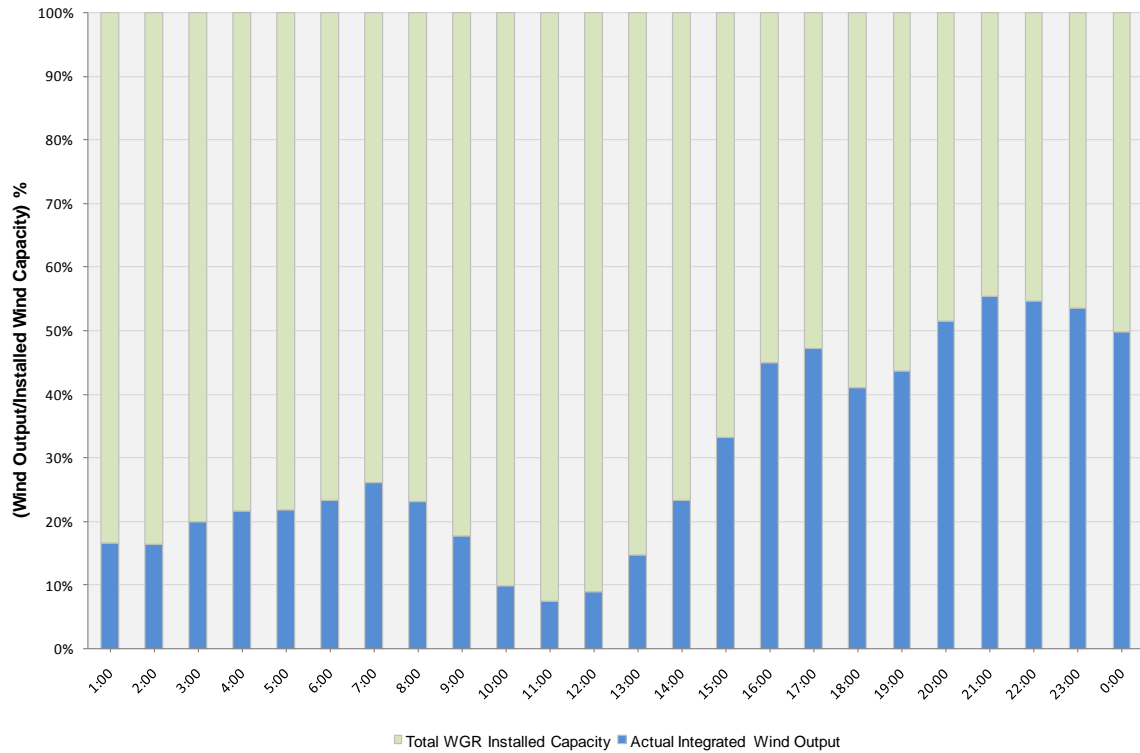
Peak Load	33,562 MW
Load Peak Hour	19
Wind Record 06/12/10	7016 MW
Max Wind value	5405 MW
Wind Peak Hour	20:37:40
Wind Integration %	16.61

Hourly Average Actual Load vs. Actual Wind Output
11-16-2010

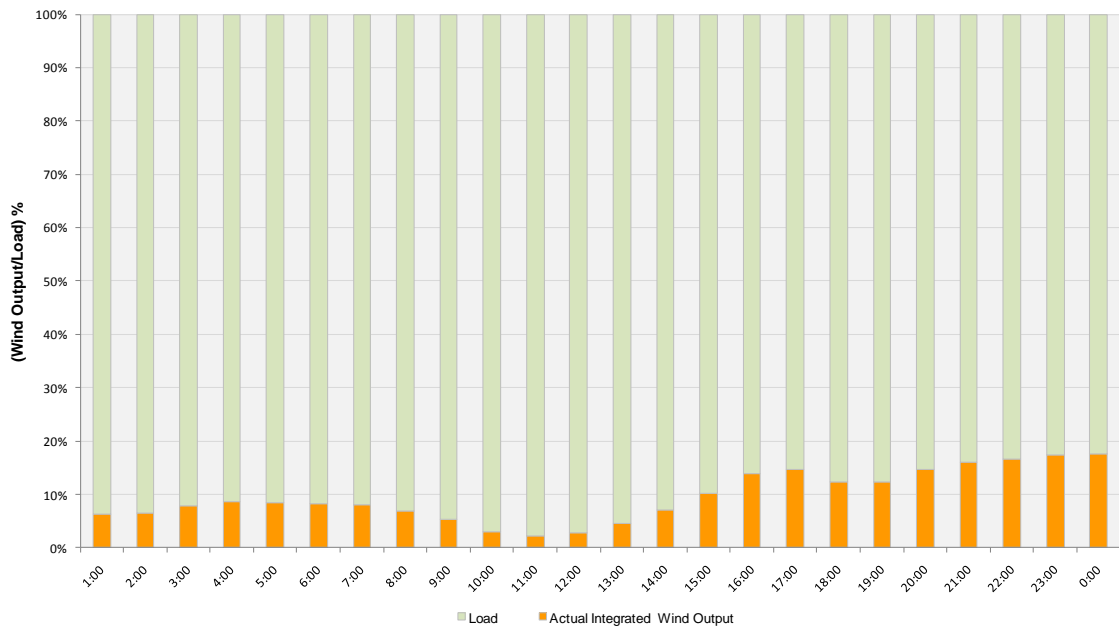




Actual Wind Output as a Percentage of the Total Installed Wind Capacity
11-16-2010



Actual Wind Output as a Percentage of the ERCOT Load
11-16-2010





ERCOT Load vs. Actual Wind Output 11/9/10 - 11/16/10

